

39 Westbury Street, Swansea, SA1 4JW

LARGE UNIT WITH MEZZANINE SPACE IN RESIDENTIAL AREA

UNIT TO LET

Total GIA 500.54 sq.m 5,388 sq.ft £21,000 PAX

Large Commercial Unit | Residential Area | Off Road Parking

39 Westbury Street, Swansea, SA1 4JW

LARGE UNIT WITH MEZZANINE SPACE IN RESIDENT AREA

LOCATION

The property is located on Westbury Street, Swansea, a mainly residential thoroughfare linking Brynymor Road and Walter Road. Westbury Street is 0.4 miles from the popular suburb of Uplands and 0.6 miles from Swansea City Centre.

Swansea is the second largest city in Wales, located approximately 45 miles west of the Capital City of Cardiff. J42 of the M4 Motorway is approximately 5 miles east of the City Centre.

DESCRIPTION

The accommodation briefly comprises a ground floor, largely open plan work space with WC facilities and a small separate partitioned area to the rear of the unit.

The unit benefits from mezzanine space which provides first floor space covering the majority of the floor area. Skylights are installed across the length of the unit providing daylight to the space.

Externally there is a small area for off road parking.

TENURE

The property is available on a new lease, terms subject to negotiation.

VAT

All figures are exclusive of VAT, where applicable.

ASKING PRICE

We have been instructed to seek offers in the region of **£21,000 Per Annum Exclusive**

ACCOMMODATION

Gross Internal Area		
Area	m.sq	ft.sq
Ground Floor	240.88	2,593
Ground Floor Ancillary	26.37	284
Mezzanine	233.29	2,511
Total	500.54	5,388

39 Westbury Street, Swansea, SA1 4JW

LARGE UNIT WITH MEZZANINE SPACE IN RESIDENT AREA

PLANNING

We understand that the property benefits from B2 use under The Town and Country Planning (Use Classes) Order 1987 (as amended). Other uses would be considered, subject to relevant planning consent.

BUSINESS RATES

Our inspection of the rating list shows the following assessment for the subject premises.

Rateable Value: £11,500(April 2023)

UBR for Wales 2024/25 56.2p in the £

Rates Payable: £6,463

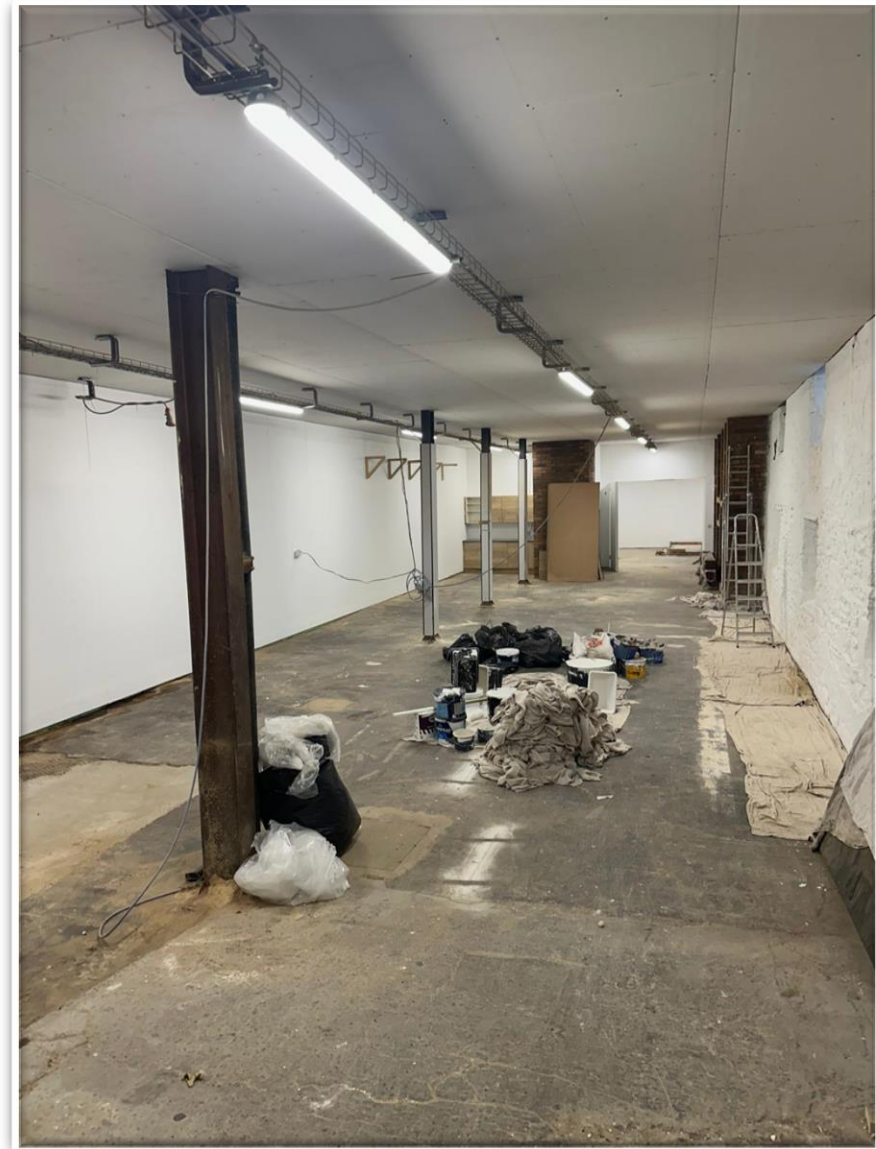
CONTACT

For further information and to arrange a viewing please contact -

Glanmor Chartered Surveyors.

Tel: 01792 439105

Email: info@glanmorproperty.co.uk



39 Westbury Street, Swansea, SA1 4JW

LARGE UNIT WTH MEZZANINE SPACE IN RESIDENT AREA



SUBJECT TO CONTRACT Disclaimer: Glanmor Property Limited, October 2024

Important notice relating to the Misrepresentation Act 1967. Glanmor Property Ltd act for itself and the vendor as agents for the vendor give notice that: 1. We provide the information contained in these particulars for guidance to intending purchasers, licensees or any other third parties and they are for your general information only and will be used at your own risk. 2. We will use all reasonable endeavors to ensure the accuracy of information, however, we do not guarantee or warrant the accuracy or completeness, factual correctness or reliability of any information in the particulars (especially as the information may have been obtained from third parties) and do not accept any liability for any errors or omission including any inaccuracies or typographical errors. 3. Any interested purchasers, licensees or any third parties should not view the information in the particulars as statements or representations of fact and should satisfy themselves that the facts and specific details in the particulars are correct and accurate especially in relation to floor areas and other measurements through inspection or other means, as appropriate, and will be responsible for taking independent surveys or valuations before entering into any legally binding transaction in respect of the property or premises that is the subject matter of these particulars. 4. We have not made any investigations or otherwise of any issues concerning pollution and potential land, building, air or water contamination. Prospective purchasers, licensees or any third parties must undertake their own enquiries and satisfy themselves in this regard. 5. Unless otherwise stated, all prices and rents are quoted exclusive of VAT.